

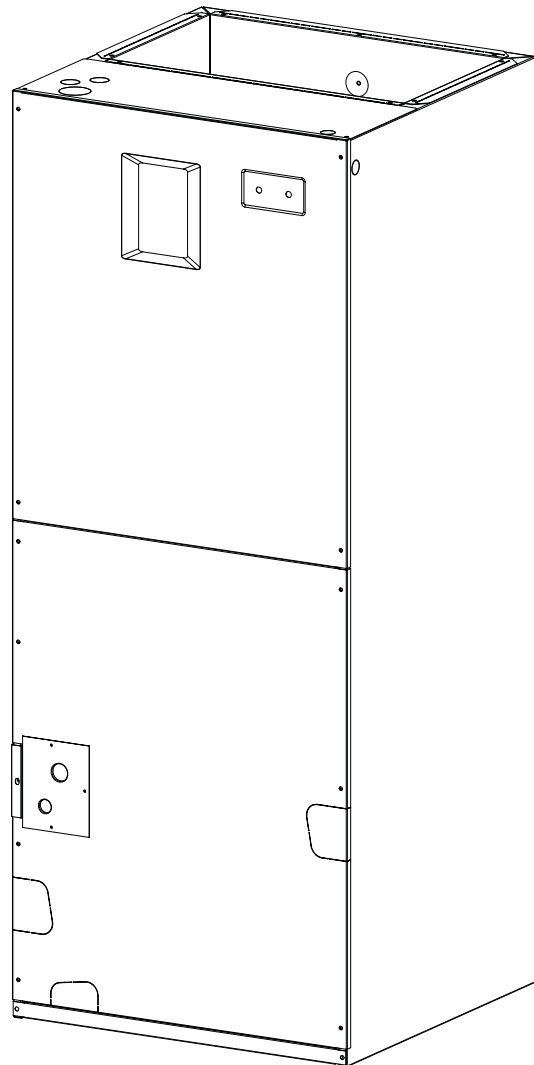
B5BM Series Air Handler

13 SEER Residential System 18,000 - 60,000 Btuh (Heat Pump & Air Conditioner)

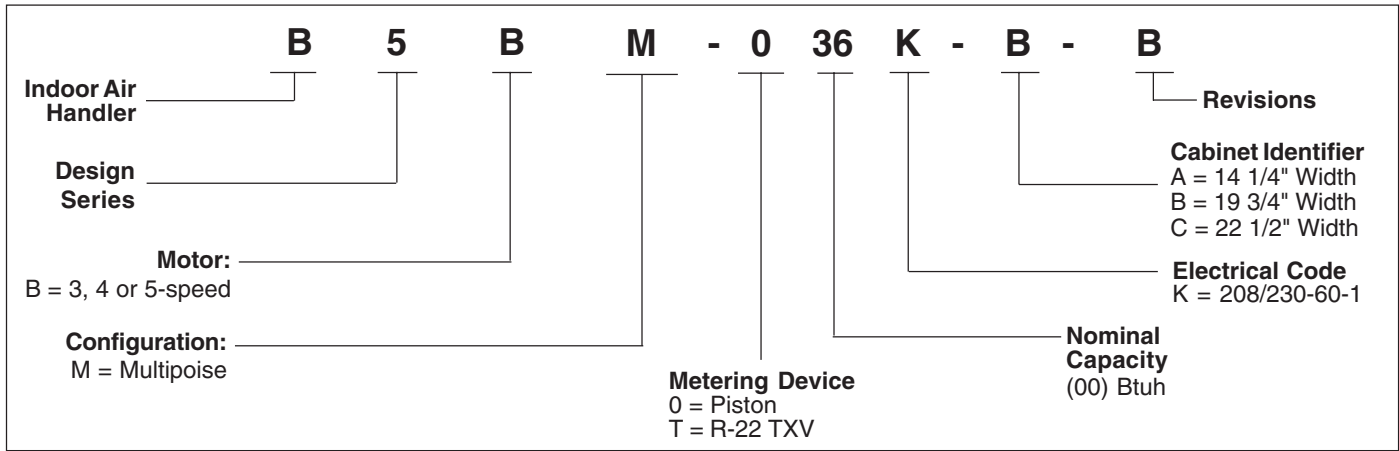
The B5BM Series of air handlers, when combined with our heat pump or air conditioner, offer a full line of quality, split system heating and cooling equipment.

FEATURES and BENEFITS

- **Durable, Attractive Cabinet** — Designed using galvanized steel. The door is also galvanized steel, with a polyester urethane finish. The 950 hour salt spray finish resists corrosion 50% better than comparable units. The plastic drain pan is corrosion-resistant.
- **Multi-poised** — Can be used in horizontal, upflow, downflow and vertical applications.
- **Multi-speed** — Gives flexibility of installation.
- **Ease-of-Service** — Plug-in wire connections and built-in filter rack makes the air handler easy to service.
- **Plug-in Heater Kits** — Available in 5kw - 30 kw (Not for use in 115 Volt units)
- **Circuit Board** — Incorporating blower time delay relay, low voltage terminal strip, and heat-strip sequencing.
- **Air Handler Control Board** — Controls time-sequencing of heat stages with field-selectable sequence timing.
- **Breaker Accessibility** — Breaker accessible from front of unit when heater is applied.
- **No Fasteners on Sides or Back** — Smooth surfaces for ease of installation.
- **Cabinet Insulation** — 1" insulation with an R-value of 4.2 contributes to quiet operation and prevents cabinet sweating in difficult applications.
- **Warranty** — The best in the industry.
 - 5 year limited parts
 - 2 year mileage
 - 2 year labor



MODEL IDENTIFICATION CODE



ELECTRICAL DATA

Model Number H6HK-	Voltage	KW	Standard Air Handler								Variable Speed Air Handler							
			Min. Circuit Ampacity				Max. Over-Current Protection				Min. Circuit Ampacity				Max. Over-Current Protection			
			Circuit A	Circuit B	Circuit C	Single Circuit	Circuit A	Circuit B	Circuit C	Single Circuit	Circuit A	Circuit B	Circuit C	Single Circuit	Circuit A	Circuit B	Circuit C	Single Circuit
005H-XX	240	4.8	-	-	-	32.5	-	-	-	40	-	-	-	33.5	-	-	-	40
008H-XX	240	7.5	-	-	-	46.6	-	-	-	50	-	-	-	48.1	-	-	-	50
010H-XX	240	9.6	-	-	-	57.5	-	-	-	60	-	-	-	58.5	-	-	-	60
015H-XX	240	14.4	57.5	25.0	-	82.5	60	30	-	90	58.5	25.0	-	83.5	60	30	-	90
020H-XX	240	19.2	57.5	50.0	-	107.5	60	60	-	125	58.5	50.0	-	108.5	60	50	-	125
025H-XX	240	14.4	57.5	50.0	25.0	132.5	60	60	30	150	58.5	50.0	25.0	133.5	60	30	30	150
030H-XX	240	19.2	57.5	50.0	50.0	157.5	60	60	60	175	58.5	50.0	50.0	158.5	60	50	60	175
005H-XX	208	3.6	-	-	-	29.1	-	-	-	30	-	-	-	30.9	-	-	-	40
008H-XX	208	5.6	-	-	-	41.2	-	-	-	50	-	-	-	43.1	-	-	-	50
010H-XX	208	7.2	-	-	-	50.8	-	-	-	60	-	-	-	52.5	-	-	-	60
015H-XX	208	10.8	50.8	21.6	-	72.4	60	25	-	80	52.5	21.6	-	74.2	60	30	-	80
020H-XX	208	14.4	50.8	43.3	-	94.0	60	50	-	100	52.5	43.3	-	95.8	60	50	-	100
025H-XX	208	10.8	50.8	43.3	21.6	115.7	60	50	25	125	52.5	43.3	21.6	74.2	60	30	25	125
030H-XX	208	14.4	50.8	43.3	43.3	137.3	60	50	50	150	52.5	43.3	43.3	95.8	60	50	50	150
009Q-XX	240	9.0	-	-	-	34.6	-	-	-	40	-	-	-	35.6	-	-	-	40
015Q-XX	240	14.4	-	-	-	50.9	-	-	-	60	-	-	-	51.9	-	-	-	60
009Q-XX	208	6.8	-	-	-	31.1	-	-	-	40	-	-	-	32.1	-	-	-	40
015Q-XX	208	10.8	-	-	-	45.0	-	-	-	50	-	-	-	46.0	-	-	-	50

ACCESSORIES

Accessory Kit Description	Cabinet Size			Order Number
	A	B	C	
Down-flow adaptor kit	X			917342
		X		919321
			X	919322
Single circuit adaptor for 2 circuit breakers	X	X	X	913874
Single circuit adaptor for 3 circuit breakers	n/a	n/a	X	913556
Horizontal conversion kit for vertical-only units	X	X		903749
		X ¹		914730
			X	914730
Variable Speed Blower Conversion Kit	X			919325
		X		919326
			X	919327

240V Single-Phase Heater Kit Application

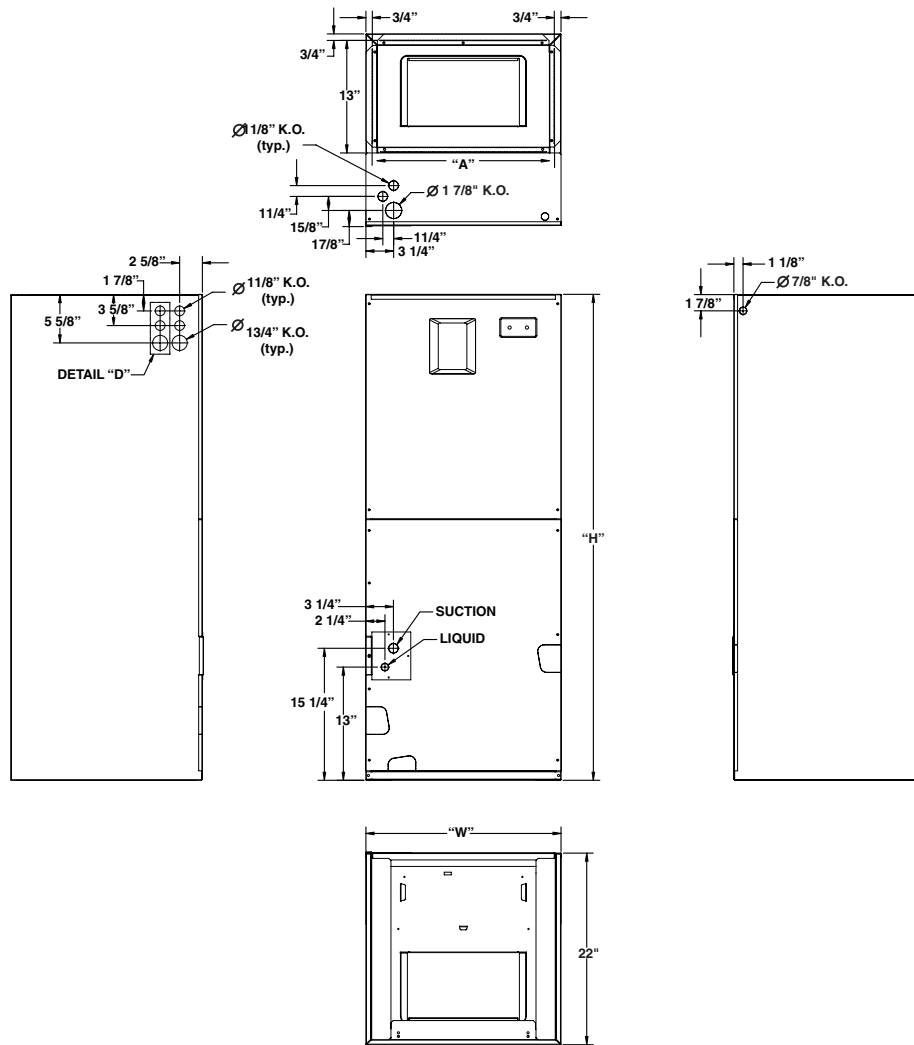
Nominal KW	Matched Units								Order Number	
	024/025K - A	030K-A	024/025K - B	030K-B	036K-B	042K-B	048K-C	060K-C	With Circuit Breakers	Without Circuit Breakers
5	X	X	X	X	X	X	X	X	904407	904406
8	X	X	X	X	X	X	X	X	904409	904408
10	X	X	X	X	X	X	X	X	904412	904411
15	n/a	X	n/a	X	X	X	X	X	904414	n/a
20	n/a	n/a	n/a	X	X	X	X	X	904416	n/a
25	n/a	n/a	n/a	n/a	n/a	n/a	X	X	904417	n/a
30	n/a	n/a	n/a	n/a	n/a	n/a	X	X	904418	n/a

240V Three-Phase Heater Kit Application

Nominal KW	Matched Units								Order Number	
	024/025K - A	030K-A	024/025K - B	030K-B	036K-B	042K-B	048K-C	060K-C	With Circuit Breakers	Without Circuit Breakers
9	X	X	X	X	X	X	X	X	904410	n/a
15	n/a	X	n/a	X	X	X	X	X	904415	n/a

¹ Required for 042 models

DIMENSIONS



SPECIFICATIONS

Model Number	*24K-A	*25K-A	*30K-A	*24K-B	*25K-B	*30K-B	*36K-B	*42K-B	*48K-C	*49K-C	*60K-C
B5BM											
Nominal cooling capacity - BTUh ¹	24000	24000	30000	24000	24000	30000	36000	42000	48000	48000	60000
Orifice size (if supplied) ²	0.050	0.061	0.069	0.050	0.061	0.069	0.078	0.083	0.090	0.090	0.101
Maximum Available Auxiliary Heat	10	10	15	10	10	20	20	20	30	30	30
Nominal Blower Size (Dia. x Width)	10 x 6	10 x 6	10 x 6	10 x 8	10 x 8	10 x 8	10 x 8	10 x 8	11 x 10	11 x 10	11 x 10
Motor Hp-speeds-type	1/5-3-PSC	1/5-3-PSC	1/3-3-PSC	1/5-3-PSC	1/5-3-PSC	1/3-3-PSC	1/3-3-PSC	1/3-3-PSC	3/4-5-BDC	3/4-5-BDC	3/4-5-BDC
Filter Size (supplied internal filter rack) ³	12x20x1	12x20x1	12x20x1	18x20x1	18x20x1	18x20x1	18x20x1	18x20x1	20x20x1	20x20x1	20x20x1
Approximate Shipping Weight, lbs	87	87	90	107	107	110	110	130	150	150	155
Height, "H", in.	43-1/2	43-1/2	43-1/2	43-1/2	43-1/2	43-1/2	43-1/2	49-1/2	56	56	56
Width, "W", in.	14-1/4	14-1/4	14-1/4	19-3/4	19-3/4	19-3/4	19-3/4	19-3/4	22-1/2	22-1/2	22-1/2
Supply Air Outlet Dimension, in.	12-7/8 x 12-3/4	12-7/8 x 12-3/4	12-7/8 x 12-3/4	12-7/8 x 18-1/4	12-7/8 x 18-1/4	12-7/8 x 18-1/4	12-7/8 x 18-1/4	12-7/8 x 18-1/4	12-7/8 x 21	12-7/8 x 21	12-7/8 x 21
Ref. Connection Sizes, in. (suc./liq.)	3/4 - 3/8	3/4 - 3/8	3/4 - 3/8	3/4 - 3/8	3/4 - 3/8	3/4 - 3/8	3/4 - 3/8	7/8 - 3/8	7/8 - 3/8	7/8 - 3/8	7/8 - 3/8

¹ See current ARI Directory for certified combinations and ratings.

² When supplied, orifice is sized for most common R-22 13 SEER HP match. See outdoor unit documentation for orifice size.

³ Filter is not supplied with unit.

BLOWER PERFORMANCE DATA

		Dry Coil ESP							
		0.10	0.20	0.30	0.40	0.50	0.60	0.70	0.80
*24/*25K, A-Cabinet	Low	683	647	607	563	515	463	406	345
	Corrected ESP*		0.07	0.19	0.30	0.42	0.53	0.65	0.76
	Medium	861	823	781	734	682	625	564	498
	Corrected ESP*			0.11	0.23	0.36	0.48	0.60	0.72
	High	1072	1026	975	920	860	797	730	659
	Corrected ESP*				0.14	0.27	0.40	0.53	0.67
		Dry Coil ESP							
		0.10	0.20	0.30	0.40	0.50	0.60	0.70	0.80
*30K, A-Cabinet	Low	849	825	793	753	704	647	581	508
	Corrected ESP*		0.04	0.15	0.27	0.38	0.50	0.62	0.74
	Medium	1118	1087	1046	997	940	874	799	717
	Corrected ESP*			0.04	0.17	0.29	0.42	0.55	0.68
	High	1277	1233	1184	1130	1070	1005	935	860
	Corrected ESP*				0.10	0.23	0.36	0.49	0.63
		Dry Coil ESP							
		0.10	0.20	0.30	0.40	0.50	0.60	0.70	0.80
*24/*25K, B-Cabinet	Low	708	690	664	628	584	532	471	401
	Corrected ESP*		0.08	0.19	0.30	0.41	0.53	0.64	0.76
	Medium	909	904	886	854	810	753	683	600
	Corrected ESP*			0.10	0.22	0.33	0.46	0.58	0.71
	High	1118	1132	1126	1101	1056	992	908	805
	Corrected ESP*				0.09	0.22	0.35	0.49	0.64
		Dry Coil ESP							
		0.10	0.20	0.30	0.40	0.50	0.60	0.70	0.80
*30/*36K, B-Cabinet	Low	953	915	871	821	764	701	631	555
	Corrected ESP*		0.04	0.16	0.27	0.39	0.51	0.62	0.74
	Medium	1265	1232	1188	1133	1067	991	903	805
	Corrected ESP*			0.03	0.15	0.28	0.41	0.54	0.68
	High	1427	1385	1333	1270	1196	1113	1018	913
	Corrected ESP*				0.09	0.23	0.36	0.50	0.64
		Dry Coil ESP							
		0.10	0.20	0.30	0.40	0.50	0.60	0.70	0.80
*42K, B-Cabinet	Low	1324	1302	1271	1233	1187	1134	1072	1003
	Corrected ESP*		0.06	0.17	0.27	0.38	0.49	0.61	0.72
	Medium	1485	1455	1418	1373	1320	1260	1193	1118
	Corrected ESP*			0.13	0.24	0.36	0.47	0.58	0.70
	High	1637	1601	1558	1506	1447	1380	1305	1223
	Corrected ESP*				0.21	0.33	0.44	0.56	0.68
		Dry Coil ESP							
		0.10	0.20	0.30	0.40	0.50	0.60	0.70	0.80
*48/*49/ *60K, C-Cabinet	Low	1348	1272	1198	1126	1056	988	922	858
	Corrected ESP*		0.11	0.22	0.33	0.44	0.55	0.65	0.76
	Med-Low	1517	1455	1390	1325	1258	1189	1120	1048
	Corrected ESP*			0.19	0.30	0.41	0.52	0.63	0.74
	Medium	1799	1752	1702	1650	1596	1539	1481	1420
	Corrected ESP*				0.25	0.36	0.47	0.58	0.69
	Med-High	1956	1910	1862	1811	1756	1699	1639	1575
	Corrected ESP*				0.22	0.33	0.44	0.55	0.66
	High	2146	2099	2050	2000	1948	1894	1839	1783
	Corrected ESP*					0.29	0.40	0.51	0.62

* ESP estimate with wet coil and filter



CERTIFICATION APPLIES ONLY WHEN THE COMPLETE SYSTEM IS LISTED WITH ARI



Notes:

- 1) Airflow is shown in cfm, +/- 5%.
- 2) External static pressure (ESP) is shown in inches w.c.
- 3) See unit nameplate or installation instructions for maximum recommended external static pressure.