



**MANUFACTURED
HOUSING**



Standard-Vent Gas Water Heaters

1-Year Tank Warranty • 1-Year Parts Warranty



Complies with HUD Standards for Manufactured Housing Installation. Design-Certified by CSA International –

Also complies with National Appliance Energy Conservation Act (NAECA) energy-efficiency standards effective January 20, 2004.

Gas Control Is Convertible for Natural and Propane Gas –

For flexibility to meet the varying needs of Manufactured Housing installations.

Side-Mounted Cold Water Inlet – For ease of installation when cold water supply originates below the structure. Top-mounted hot water outlet.

Green Choice™ Eco-Friendly Gas Burner – Patented design reduces NOx emissions by up to 33% and complies with Southern California and Texas requirements.

Glass-Lined Tank – For long-lasting protection against rust and corrosion.

Anode Rod – Helps protect against rust and corrosion for long life.

Factory-Installed Temperature & Pressure (T&P) Relief Valve

Maximum Hydrostatic Working Pressure 150 PSI

NORDYNE™

8000 Phoenix Parkway
P.O. Box 8809
O'Fallon, MO 63366



**MANUFACTURED
HOUSING**

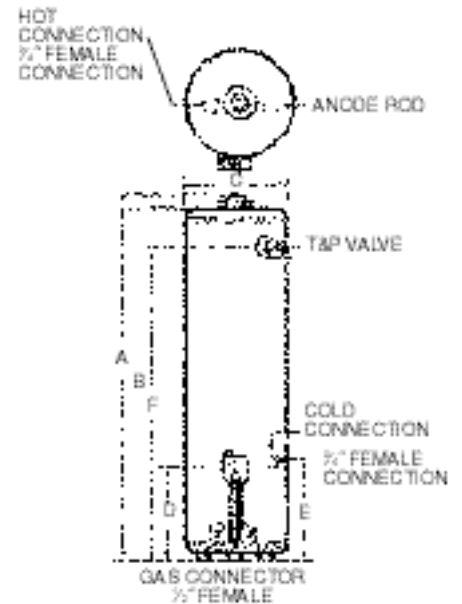


Standard-Vent Gas Water Heaters

1-Year Tank Warranty • 1-Year Parts Warranty

MODEL NUMBER	PEAK DEMAND OUTPUT (1st Hour Rating Gallons)	ENERGY FACTOR	GAL. CAP.	BTU INPUT PER HOUR NATURAL/PROPANE	RECOVERY 90°F RISE GALLONS	R VALUE	DIMENSIONS IN INCHES							APPROX. SHIPPING WEIGHT (LBS.)
							A	B	C	D	E	F	DRAFT HOOD OUTLET	
IN1 30 NHMT2	54	0.61	30	30,000	31	16	59-1/2	56	18	15	16-3/4	51-1/4	3	115
IN1 40 NHMT2	63	0.59	40	30,000	31	16	60	56-1/2	20	15	20-3/4	51-1/4	3	134
IN1 50 NHMT2	77	0.58	50	38,000	39	16	62-1/4	58-3/4	22	15	20-1/2	52-1/2	3 or 4	168

Recoveries are rounded to nearest gallon.
To order 5-year warranty, substitute "V" for "1" in model number (INV 30 NHMT 2).



Standard-Vent Models



8000 Phoenix Parkway
P.O. Box 8809
O'Fallon, MO 63366