



**MANUFACTURED  
HOUSING**

## **Electric Water Heaters**

**1-Year Tank Warranty • 1-Year Parts Warranty**



### **Complies with HUD Standards for Manufactured Housing Installation. Design-Certified by CSA International –**

Also complies with National Appliance Energy Conservation Act (NAECA) energy-efficiency standards effective January 20, 2004.

### **Side-Mounted 3/4" Cold Water Inlet and Hot Water Outlet –**

For ease of installation when cold water supply originates below the structure.

### **Side-Mounted Electrical Junction Box (1/2" or 3/4" conduit)**

– For ease of installation.

**30, 40 and 50 Gallon Models Available with One or Two Heating Elements** – One element only on 20-gallon model. Available 120V inputs: 1650 and 2000 watts. Available 240V inputs: 3800, 4500 and 5500 watts.

**Glass-Lined Tank** – For long-lasting protection against rust and corrosion.

**Anode Rod** – Helps protect against rust and corrosion for long life.

**Factory-Installed Temperature & Pressure (T&P) Relief Valve**

**Maximum Hydrostatic Working Pressure 150 PSI**

**UL Listed** – Complies with Underwriters Laboratories Inc. Standards of Safety – UL 174.

**NORDYNE™**

8000 Phoenix Parkway  
P.O. Box 8809  
O'Fallon, MO 63366



**MANUFACTURED  
HOUSING**

**Electric Water Heaters**

**1-Year Tank Warranty • 1-Year Parts Warranty**

| MODEL NUMBER | FIRST HOUR RATING GALLONS | ENERGY FACTOR | GALLON CAPACITY | STD. VOLTAGE/WATTAGE | RECOVERY 90°F RISE GALLONS | R VALUE | DIMENSIONS IN INCHES |        |        | APPROX. SHIPPING WEIGHT (LBS.) |
|--------------|---------------------------|---------------|-----------------|----------------------|----------------------------|---------|----------------------|--------|--------|--------------------------------|
|              |                           |               |                 |                      |                            |         | A                    | B      | C      |                                |
| IN1 20 1HMTK | –                         | –             | 19.9            | 120V, 1650 Watts     | 8                          | 12      | 34                   | 26-1/2 | 17     | 76                             |
| IN1 30 DHMS  | 43                        | .93           | 30              | 240V, 3800 Watts     | 17                         | 16      | 37-1/2               | 28-1/4 | 20-1/2 | 90                             |
| IN1 40 DHMS  | 51                        | .92           | 40              | 240V, 3800 Watts     | 17                         | 16      | 46                   | 38-1/4 | 20-1/2 | 115                            |
| IN1 52 DHMT  | 58                        | .90           | 50              | 240V, 3800 Watts     | 17                         | 16      | 56                   | 47-3/4 | 20-1/2 | 140                            |

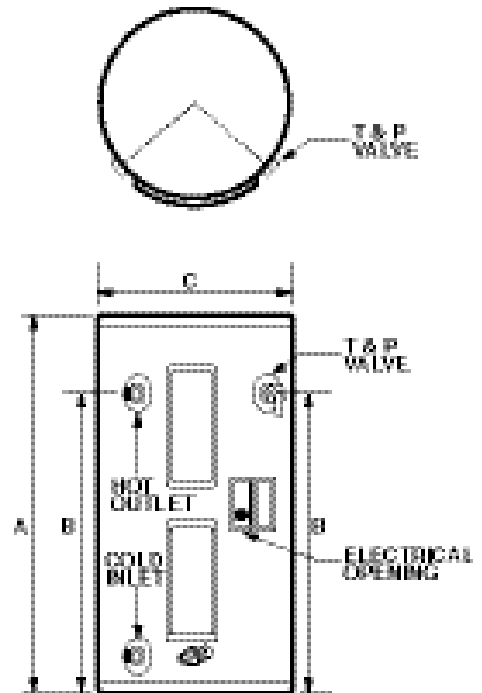
To order 5-year warranty, substitute "V" for "1" in model number (INV 20 1HMTK).

Add suffix "E" for 240 volts (IN1 20 1HMTKE).

Wattage Options – Add suffix to model number (see example below).

**Voltage**    K = 120 Volts    E = 240 Volts  
**Wattage**    3 = 3800 Watts    4 = 4500 Watts    1 = 1650 Watts

EXAMPLE: IN1 40 2HMS**E3** is equipped with 3800 watt elements and is a 240 volt model.



8000 Phoenix Parkway  
P.O. Box 8809  
O'Fallon, MO 63366