

# Who, What, Why, Where, When and How of Manufactured Homes AccuVent®

AccuVent™  
by Brentwood  
Industries Inc.

Distributed by



Effective  
Ventilation  
An Essential  
DETAIL of Every  
Insulation Job!



**ACCUVENT®**

# AccuVent™ Effective Attic Ventilation For The Modular Housing Industry.

- “Chinked batts, cardboard and foamed baffles leave a lot to be desired!”
- AccuVent™ installs fast. . .doesn't blow out. Arrives in place
- New Material / New Method



**Will this pass  
Inspection?  
Another call-back?**

# Brentwood a World Wide Leader in Plastic Cooling Tower Components



- AccuVent™ is made from recycled PVC
- Recycled from post-industrial scrap
- A non-conforming cooling tower part, becomes the AccuVent™ for Mfg'd Homes system.



AccuVent is a  
Class 1 material!

**ACCUVENT**

# AccuVent™ - provides effective attic ventilation – prevents wind-washing

- Fast and easy to install
- Smooth inspections
- No call backs
- Happy customers!
- Effective attic ventilation – important in any climate.



Image courtesy of The Commodore Corp

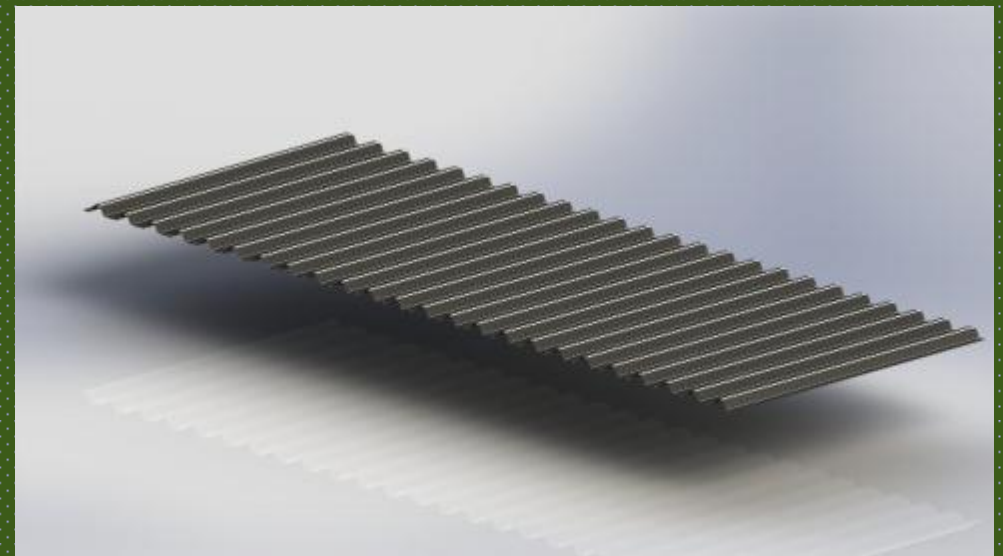
# AccuVent™ 2 components

## 3 step easy install. . .

- Manufactured Homes  
AccuVent® has two parts:
- Drift Blocker® installed on fascia – keeps insulation in and **STOPS WIND-WASHING**
- Vent component is the AccuVent 8' sheet is trapped between roof decking and truss top chord



Drift Blocker  
7"/14" x 22.5"



AccuVent  
39"/18" x 96"

**ACCUVENT®**

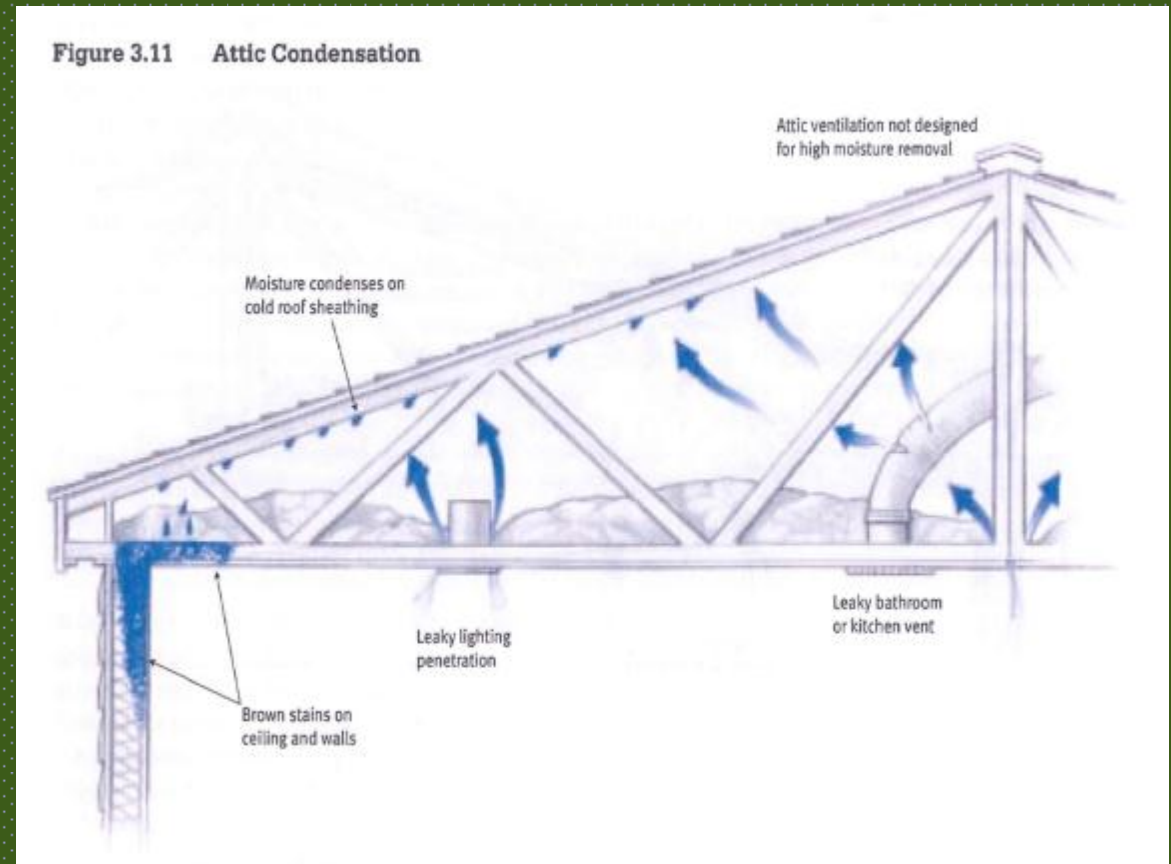
# AccuVent™ 2 components 3 step easy install. . .

- Drift Blocker is stapled to the fascia:
- Attic is blown with insulation
- Manufactured Home AccuVent® sheet is laid down across the top chord of the truss, merging with the Drift Blocker, ready for the roof deck installation.



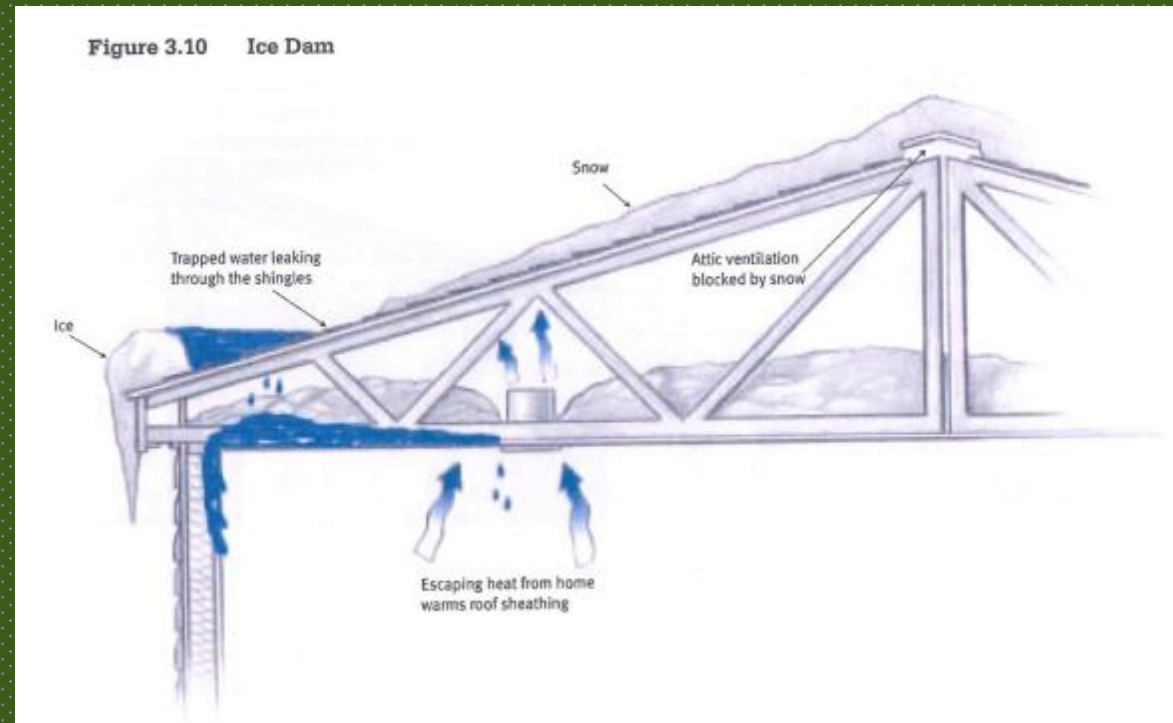
# AccuVent™ helps PREVENT Brown Stains on ceiling and walls.

- MHRA explains attic condensation problems. (see pub. Moisture Problems in Mfg'd Homes sec 3.14)
- AccuVent provides the needed ventilation to help keep the attic dry and cool.



# AccuVent™ helps PREVENT Ice Dams

- MHRA explains the Ice Damming problem. (see pub. Moisture Problems in Mfg'd Homes sec 3.13)
- AccuVent provides the needed ventilation to help keep the attic cool.





# AccuVent™ and Wind-Washing

- Educate your builder to wind-washing's negative impact on his customer.

## Wind-Washing

The phenomenon of air movement driven by wind pressures wind passing through the thermal insulation within enclosures, **causing significant loss of heat flow control and potentially causing condensation**. Typically occurs are exposed building edges, such as at the outside corners and roof eaves because of the large pressure gradients at these locations. This can be thought of as the “wind blowing through the insulating sweater” effect.

by [zope](#) — last modified 2009/06/01

Copyright © 1999-2009 Building Science Corporation |  
[Conditions of Use](#) | [Contact Us](#) | [Sign-up for Our E-Newsletter](#)

**ACCUVENT**

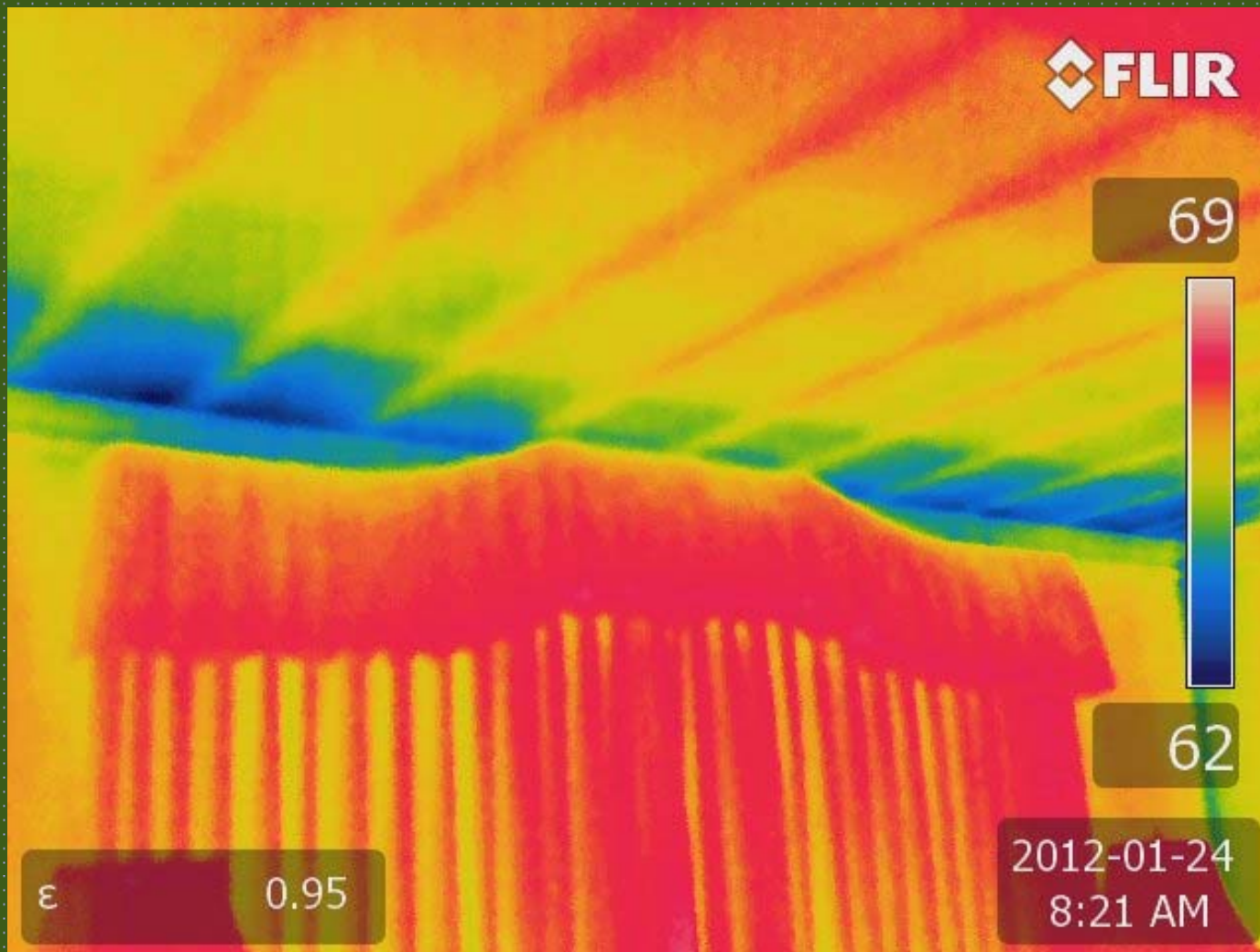
# AccuVent™ is good building science.

## “Building Science” is an Increasing Influence in new home construction

- AccuVent is a wind-wash barrier.
- Meets the Thermal Bypass Checklist for Energy Star
- Helps prevent MOLD/MILDEW challenges



Without an air barrier at the top-plate the homeowner pays more than they need to for utilities, plus are not COMFORTABLE in their home!



Infrared Images  
Courtesy of: Flemming Lund,  
Infrared Diagnostics LLC

# Manufactured Home AccuVent Solves ventilation challenges adds value!

- AccuVent perfect to include with energy upgrades.
- AccuVent a proven performance product for mfg'd housing.
- AccuVent helps you “right size” your HVAC package



Image courtesy of The Commodore Corp

**ACCUVENT**